

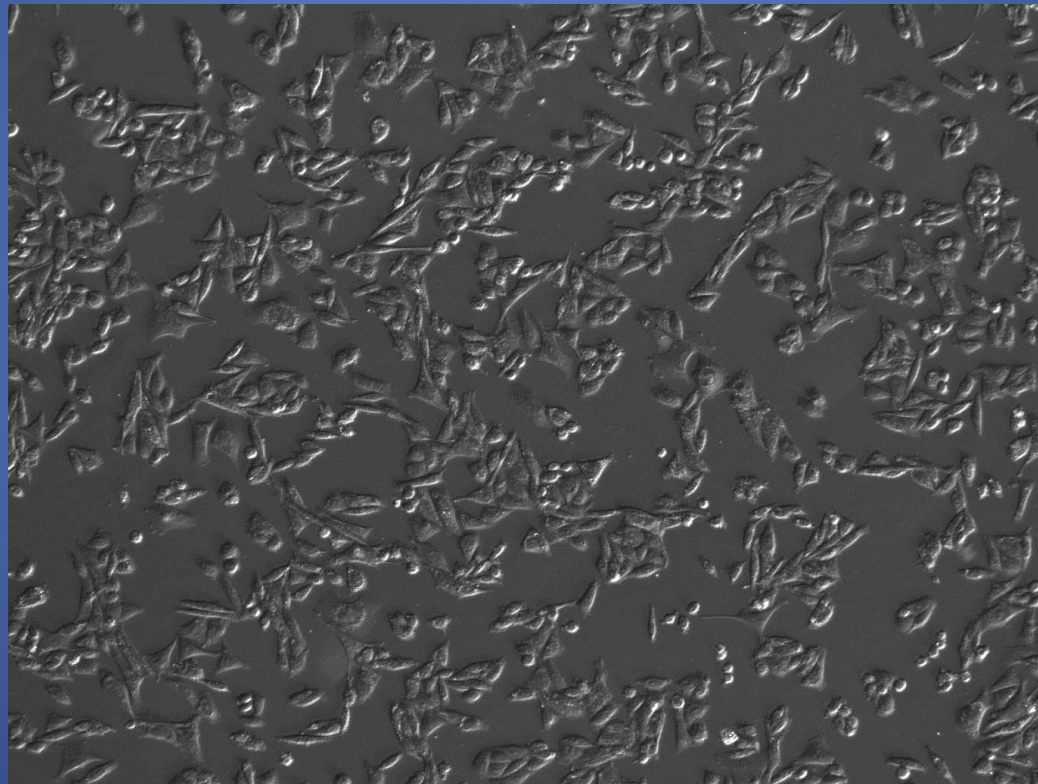


# Human Glioblastoma Cancer Stem Cells

GBM Cat# 36104-40 cultured in low  
oxygen environment, in Medium Cat#  
M36104-40S, on pre-coated ECM flasks  
E36104-40-T25

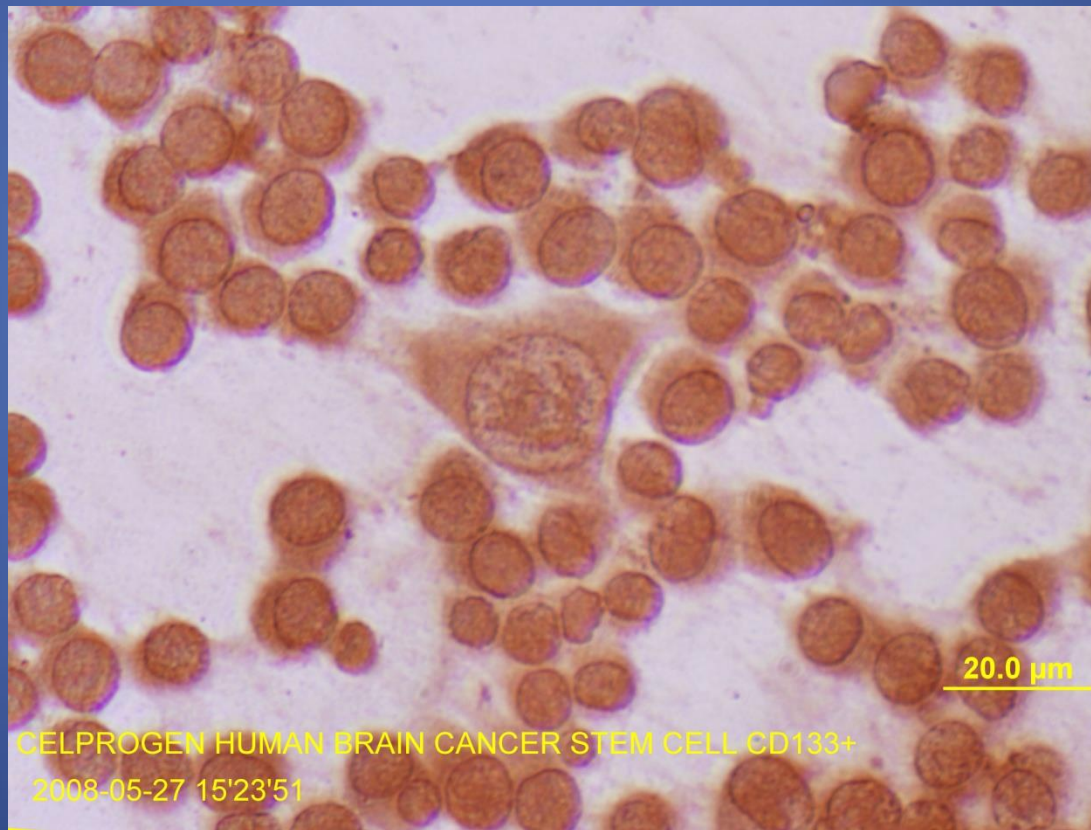
# Human GBM CSC

- Human GBM CSC

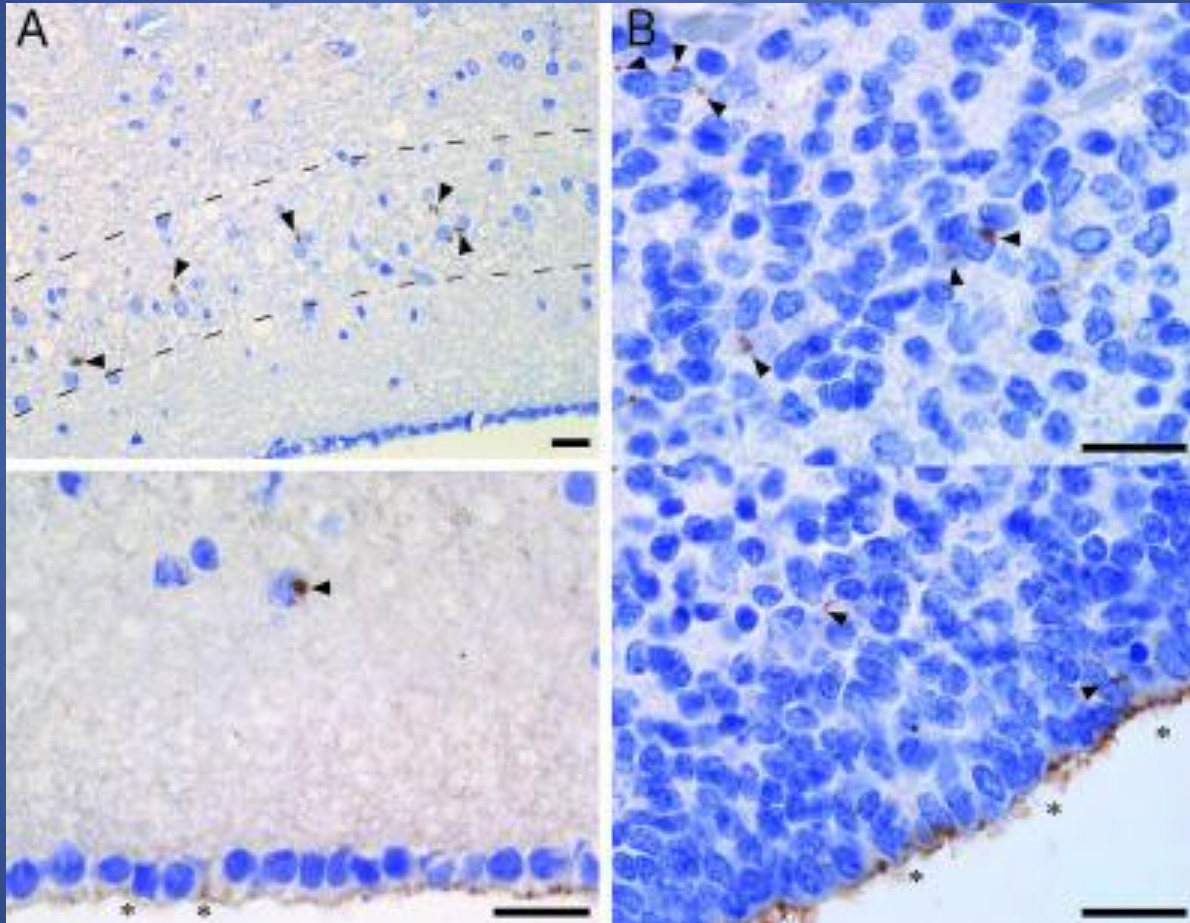


# Human GBM Cancer Stem Cells

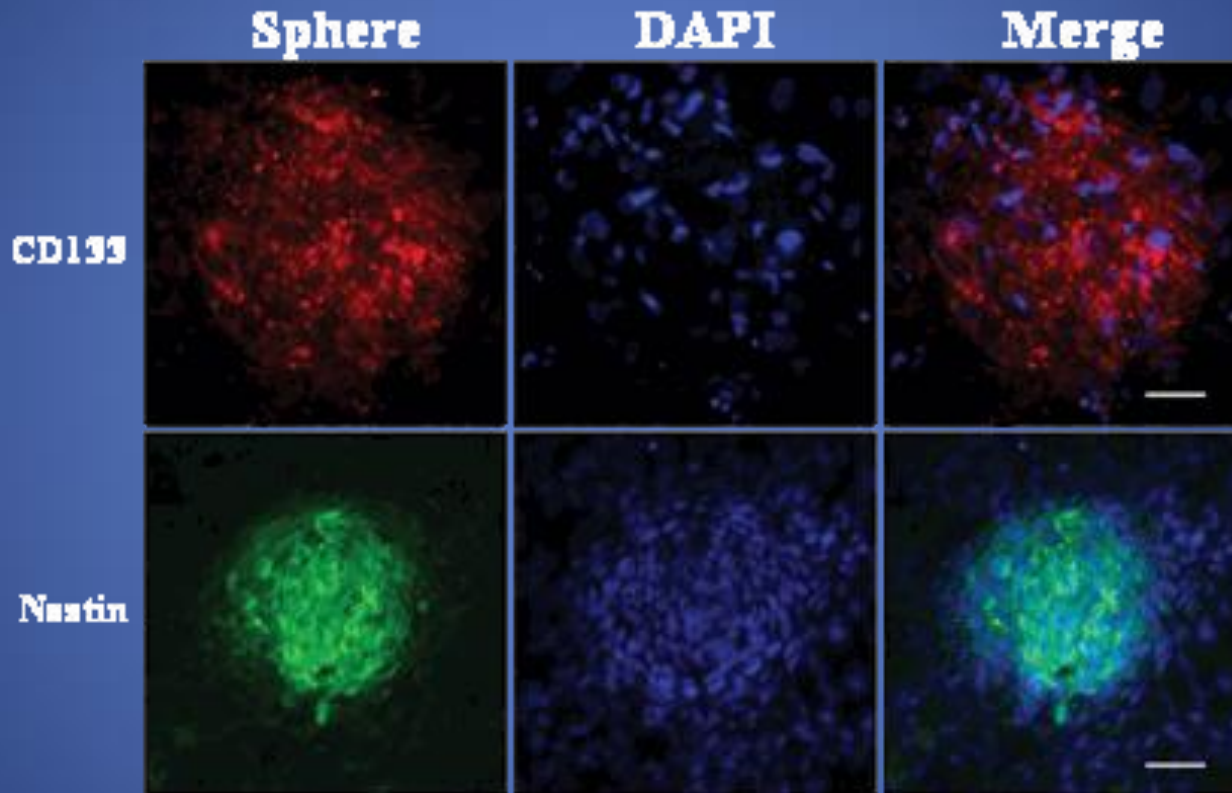
- CD133+



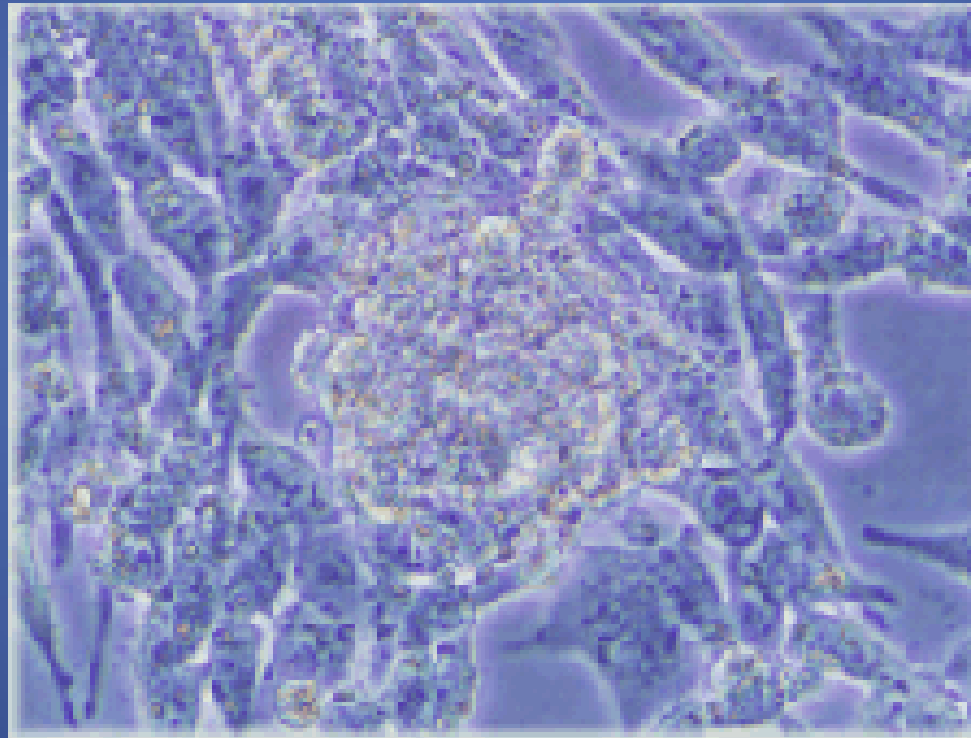
# Human GBM H&E CD133



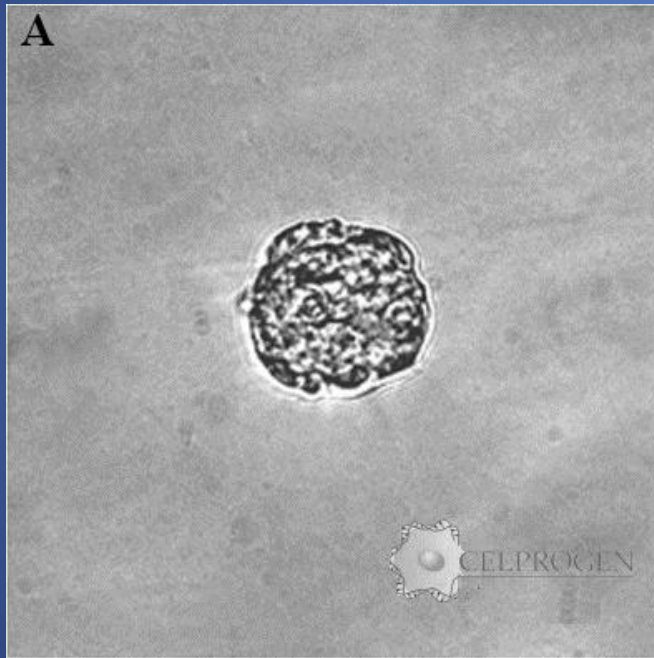
# Human GBM profile



# Human GBM Cancer Stem cell sphere

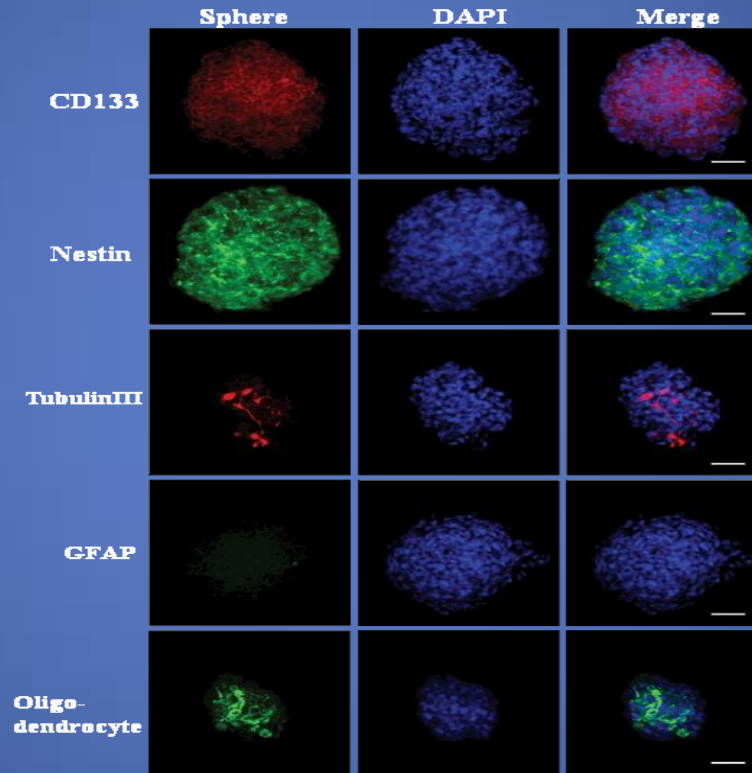


# Human Brain cancer stem cell sphere



Human GBM Cancer Stem Cell in undifferentiation media and undifferentiation matrix 7 days in culture

# Human GBM Cancer Stem cell sphere profile

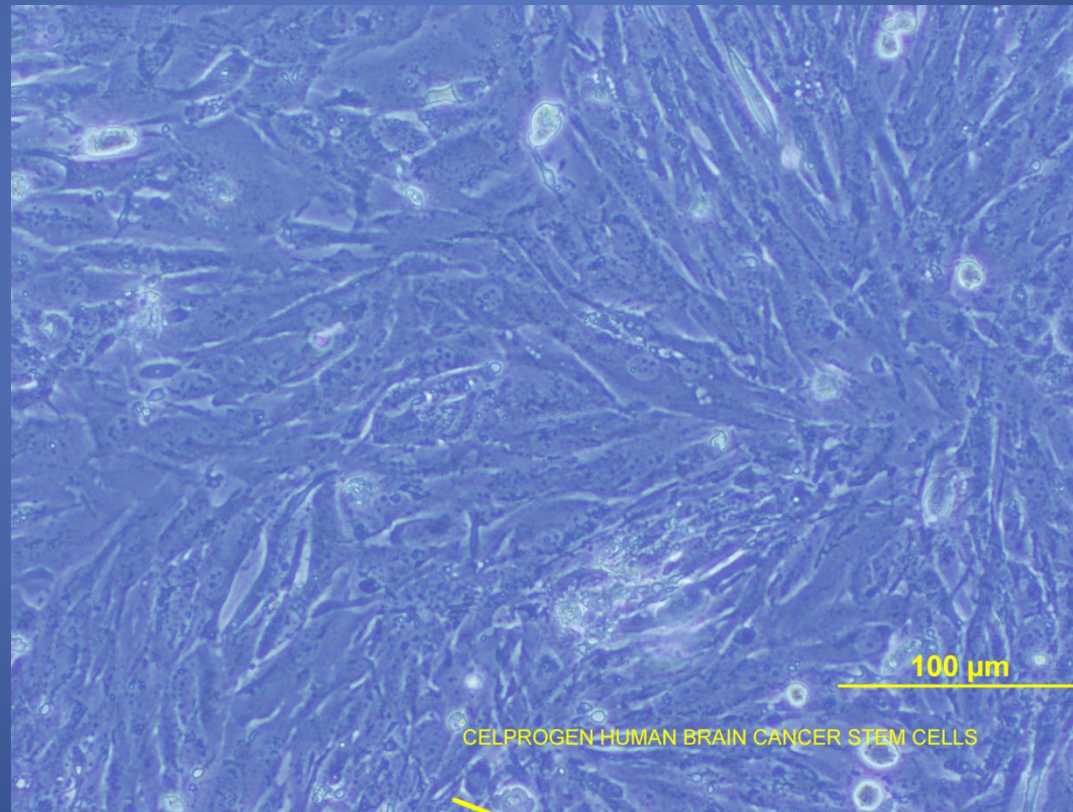




## Human GBM in Differentiation media & matrix 14 days



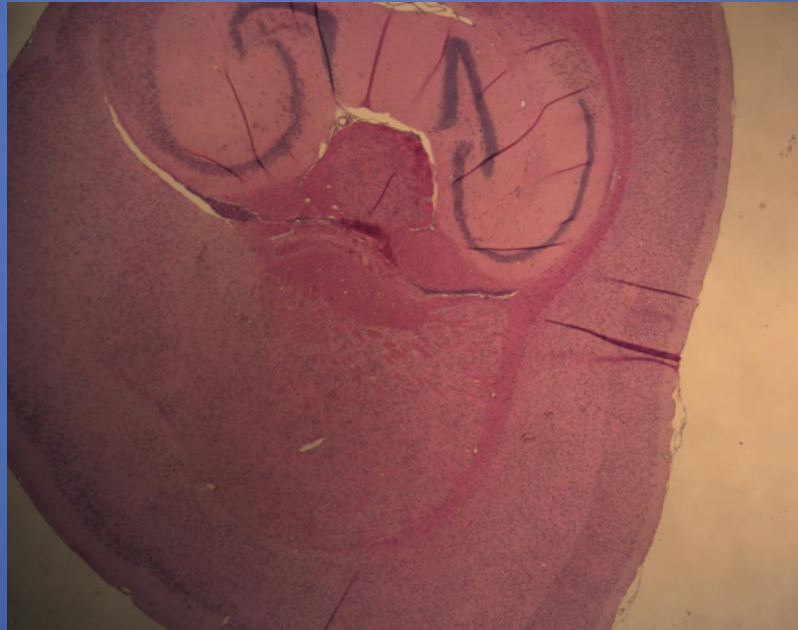
## Human GBM in Expansion Culture Conditions 7days



## Human GBM Tumor Profile 1000 cells



H & E Stain - CRCD1 Brain Cancer Stem Cells  
1000 GBM CSCs injected subcutaneous – 18 Day Tumor  
Brain Section





# Products for culturing Human GBM CSCs:

Cells Cat# 36104-40 frozen vial or plated cells 36104-40-T25

Media for culturing cells M36104-40 (serum free) or M36104-40S (with Serum)

ECM pre-coated flasks: E36104-40-T25, E36104-40-T75, E36104-40-T150, E36104-40-T225

ECM pre-coated multi-well plates: E36104-40-96Well, E36104-40-6Well

We also provide media without phenol for cell based assays- please inquire for pricing

3D culture systems is also available for these cells

PDX models are also available for these GBM CSC

We also provide CTC and parental tumors from the same patients from which we isolated GBM CSCs

Contact: [www.celprogen.com](http://www.celprogen.com)

Phone 310 542 8822